

Storage Batteries Product Lineup

Hirose Electric, as a world leader in the connectivity industry, has been developed a broad innovative electronic connectors over the years since its founding.

Please visit our Web site for details of the listed products as well as other related product lines.

■ Rack to Rack EF1 Series /Panel Mount



- ✓ Crimp contact turns into a connector by just inserting into the housing
- ✓ Quick and secure snap-in lock, no retightening of screw
- ✓ Supports 160A Max. by using 38sq cable
- ✓ 4 types of mating keys available
- ✓ TÜV, UL certified

EM12M Series



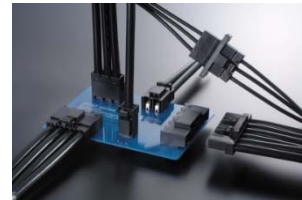
- ✓ Supports 130A Max. using 22sq cables
- ✓ Quick and secure snap-in inertia lock
- ✓ Crimp termination with commercially available crimp tool.
- ✓ Keying and colored housings prevents mis-wiring
- ✓ TÜV, UL certified

PS3C Series



- ✓ Rated up to 210A Max. using 50sq cable
- ✓ 180° reversal mate allows flexible cabling
Downsized receptacle saves space inside a battery unit.
- ✓ Safety design with IP2X finger protection
- ✓ Applicable cable: 14-50sq (WL1, WL2)
- ✓ UL, C-UL, TÜV certified

DF60 Series



- ✓ Rated up to 65A Max.
- ✓ Straight, right angle and in-line are available
- ✓ AWG 8-12
- ✓ Keying variations available
- ✓ UL/C-UL, TÜV certified

■ Plug-In Connector PS2 Series



- ✓ Floating screw allows $\pm 2.5\text{mm}$ floating mate
- ✓ Sequential contacts detect incomplete mating for safety

PS3 Series



▲ Power Type

▲ Signal Hybrid Type

- ✓ Floating screw allows $\pm 2.5\text{mm}$ floating mate
- ✓ Slim design achieved by employing unique blade contact allows application to standard 1U rack.

PS3F Series



- ✓ "Front Access" on system rack side allows cable assembly from mating side.
- ✓ Front access is best suited to the systems with no space at the back side for maintenance.

Series	Power (Max.)	Signal lines	Cable	Other features
PS2	100A	9+9	38sq	Sequential mate 2.5mm floating
	200A	18+18 42	80sq	
	300A	6+6	150sq	
PS3	210A	12+16 (GT8E)	14-50sq	- Low profile design for 1U size rack - 2mm floating
PS3F	125A	8+10 (GT8E)	22sq	2.5mm floating

*Specifications herein are subject to change without notice. Contact Hirose for the latest specifications, drawings, and availabilities.

■ Rack to Rack

EF1EF1 Series/DIN Rail Mount



- ✓ Crimp contact turns into a connector by just inserting into the housing
- ✓ Quick and secure snap-in lock, no retightening of screw
- ✓ Supports 160A Max. by using 38sq cable
- ✓ 4 types of mating keys available
- ✓ TÜV, UL certified

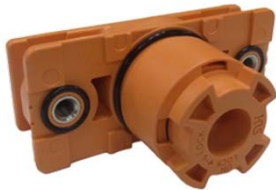
EM35M Series



- ✓ 4pos. connector attachable to DIN rail (Three-phase power source + ground)
- ✓ Quick and secure snap-in lock
- ✓ Easy crimp termination
AWG#8 Wire Conductor Size:70A
AWG#10 Wire Conductor Size: 30A
- ✓ TÜV, UL certified

■ Service Plug

EM30MSD



- ✓ Rated up to 200A
- ✓ Small and Light weight
- ✓ By rotating the plug, signal lines are switched on and off.
- ✓ Signal lines are always switched in the "off" position prior to the plug removal
- ✓ IP68* water resistant
- ✓ Accepts general crimp terminal
- ✓ IP2X finger protection
- ✓ UL, C-UL, TÜV certified

*Our test conditions:

No water intrusion, while submerged in 2 meter water depth for 14 days.



▲ Storage batteries in container



For more information about Hirose products: <http://www.hirose.com>

[Japan]		TEL: +81-45-620-3491	[Thailand]	(Bangkok)	TEL: +66-2-686-1255
[China]	(Shanghai)	TEL: +86-21-6391-3355	[USA]	(Chicago) (USA HQ)	TEL: +1-630-282-6700
	(Beijing)	TEL: +86-10-5165-9332		(San Jose)	TEL: +1-408-253-9640
	(Shenzhen)	TEL: +86-755-8207-0851		(Detroit) (Automotive)	TEL: +1-734-542-9963
[Hong Kong]	(Kowloon)	TEL: +852-2803-5338		(Boston)	TEL: +1-978-662-5255
[Taiwan]	(Taipei)	TEL: +886-2-2555-7377	[The Netherlands]	(Amsterdam)	TEL: +31-20-6557460
[Korea]	(Siheung)	TEL: +82-31-496-7000	[Germany]	(Stuttgart)	TEL: +49-711-456002-221
[Singapore]	(Anson Road)	TEL: +65-6324-6113		(Nuremberg)	TEL: +49-911-326889-63
[India]	(Delhi)	TEL: +91-12-660-8018		(Hanover)	TEL: +49-511-978261-30
	(Bangalore)	TEL: +91-80-4120-1907	[France]	(Paris)	TEL: +33-1-85764886
[Malaysia]	(Penang)	TEL: +604-648-5536	[UK]	(Milton Keynes)	TEL: +44-1908-202050

*Specifications herein are subject to change without notice. Contact Hirose for the latest specifications, drawings, and availabilities.

HIROSE ELECTRIC CO., LTD.

Issued: Dec. 15, 2017